



Ultra-Shield™ Sheet Drain 600 / 650

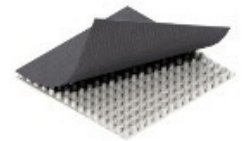
(#56-600 / #56-650)

Ultra-Shield Sheet Drain 600/650 prefabricated sheet drains are constructed using a formed polystyrene core with a filter fabric bonded to one side. The filter fabric is bonded to each dimple to prevent intrusion into the core flow channels while allowing water to freely enter the drain core. The core provides an uninterrupted path for water to flow to designated drainage exits. Ultra-Shield Sheet Drain 600/650 is designed to withstand the additional stress demands associated with horizontal applications.

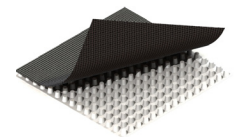
Ultra-Shield Sheet Drain 600 is constructed using a nonwoven filter fabric for standard soil applications. Ultra-Shield Sheet Drain 650 is constructed using a high strength woven monofilament filter fabric to create a strong bridge to eliminate intrusion of the fabric into the flow channel under load. Woven filter fabrics are better suited to receive concrete pours and provide excellent filtration for the organic soils used in planter applications.

Ultra-Shield Sheet Drain products are typically recommended for plaza decks, parking decks, split slab construction and planter applications.

| TECHNICAL DATA | | | 600 | 650 |
|---|------------------|---------------------|---------------|---------------|
| Physical Properties | ASTM Test Method | Unit of Measure | Typical Value | Typical Value |
| FABRIC | | | | |
| Material ¹ | | | PP | PP |
| Water Flow Rate | D-4491 | gpm/ft ² | 165 | 160 |
| | | Lpm/m ² | 6,724 | 6,520 |
| Grab Tensile Strength | D-4632 | lbs | 100 | 410 x 220 |
| | | N | 445 | 1,824 x 979 |
| Puncture Resistance | D-4833 | lbs | 65 | 105 |
| | | N | 289 | 467 |
| Apparent Opening Size | D-4751 | sieve | 70 | 45 |
| | | mm | 0.21 | 0.35 |
| Grab Elongation | D-4632 | % | 65 | 15 |
| UV Resistance | D-4355 | % / 500 Hrs | 70 | 90 |
| CORE | | | | |
| Material ¹ | | | HIPS | HIPS |
| Thickness | D-1777 | in | 0.44 | 0.44 |
| | | mm | 11 | 11 |
| Compressive Strength | D-1621 | psf | 18,000 | 18,000 |
| | | kPa | 862 | 862 |
| Installed Horizontal Flow Rate ² | D-4716 | gpm/ft | 4.1 | 4.1 |
| | | Lpm/m | 51 | 51 |
| Maximum Flow Rate ² | D-4716 | gpm/ft | 21 | 21 |
| | | Lpm/m | 261 | 261 |
| Recycled Content | | | 78% | 67% |



600



650

PACKAGING
 » 4' x 50' Rolls
 » 6 Rolls per pallet

1- PP = Polypropylene; HIPS = High Impact Polystyrene
 2- Flow rates tested @ 3600 psf (172 kPa) compressive load. Installed horizontal flow with concrete sand overburden tested at a hydraulic gradient of 0.05. Maximum in-plane flow rate tested at a hydraulic gradient of 1.0

All information, drawings and specifications are based on the latest product information available at the time of printing. Constant improvement and engineering progress make it necessary that we reserve the right to make changes without notice. All physical properties are typical values unless otherwise stated. Standard variations in mechanical properties of 10% and in hydraulic properties of 20% are normal.



RECYCLED MATERIALS

